

MATITA

SQUARE BLACK REFLECTOR

h160mm



solid
white



Ibiza
sand



meteor
grey



timeless
aluminium

Bollard for ground or solid surface installation. Head section and conical reflectors made of EN47100 die-cast aluminium and two sizes pole of extruded aluminium H.160mm, H.300mm. Powder polyester coated on treated layer to prevent corrosion, available in four standard colours, reflectors only white or black painted. inox fixing plate included.

PMMA satin diffuser mechanically fixed with silicon glue.

Integrated Power Supply 220-240V .

light source (6,2W led) MID Power Led , CRI \geq 80, 3000K/4000K power (8,5W e)

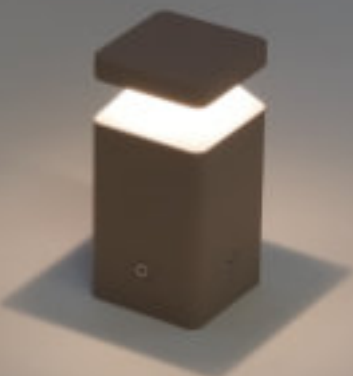
360° downward emission

IP connector kit included

CLASS I

IP65

For ground installation We suggest the use of Anchor bolts (9041)





Black reflector	3000K	h160mm	6,2W _{led}	8,5W _e	223lm	220-240V
	901311012	901311013	901311014	901311015		
	901321012	901321013	901321014	901321015		
	4000K	h160mm	6,2W _{led}	8,5W _e	234lm	220-240V

