

MATITA

SQUARE WHITE REFLECTOR

h160mm



solid
white



Ibiza
sand



meteor
grey



timeless
aluminium

Bollard for ground or solid surface installation. Head section and conical reflectors made of EN47100 die-cast aluminium and two sizes pole of extruded aluminium H.160mm, H.300mm. Powder polyester coated on treated layer to prevent corrosion, available in four standard colours, reflectors only white or black painted. inox fixing plate included.

PMMA satin diffuser mechanically fixed with silicon glue.

Integrated Power Supply 220-240V .

light source (6,2W led) MID Power Led , CRI \geq 80, 3000K/4000K power (8,5W e)

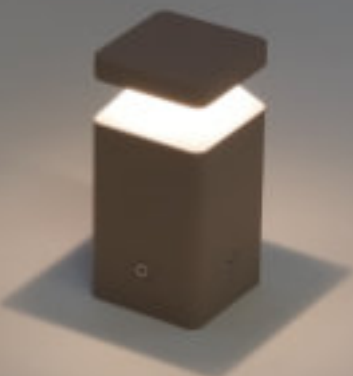
360° downward emission

IP connector kit included

CLASS I

IP65

For ground installation We suggest the use of Anchor bolts (9041)





White reflector	3000K	h160mm	6,2W _{led}	8,5W _e	368lm	220-240V
	901311002	901311003	901311004	901311005		
	901321002	901321003	901321004	901321005		
	4000K	h160mm	6,2W _{led}	8,5W _e	386lm	220-240V

